

# WTZ

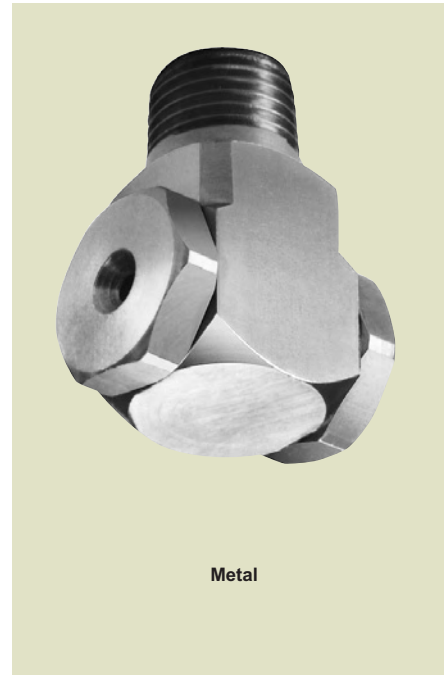
## Right Angle Full Cone

### DESIGN FEATURES

- No internal parts, clog-resistant
- Uniform distribution
- Male and female connections
- Large free passage

### SPRAY CHARACTERISTICS

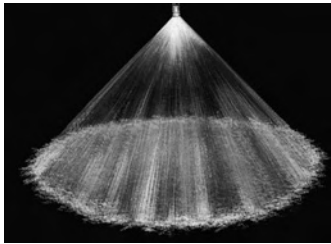
- Spray pattern:** Full Cone  
**Spray angle:** 90° and 110°  
**Flow rates:** 0.18 to 15.4 gpm



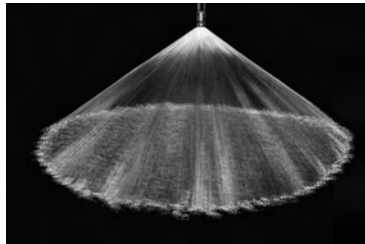
Metal



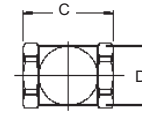
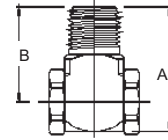
WHIRL



Full Cone 90°



Full Cone 110°



Metal

Dimensions are approximate. Check with BETE for critical dimension applications.

### WTZ Flow Rates and Dimensions

Full Cone, 90° and 110° Spray Angles, 1/4", 3/8" and 1/2" Pipe Size

Male or Female Pipe Size	Nozzle Number	K Factor	GALLONS PER MINUTE @ PSI									Approx. Orifice Dia. (in)	Dimensions (in.) Metal Only			
			5 PSI	10 PSI	15 PSI	20 PSI	30 PSI	40 PSI	60 PSI	80 PSI	100 PSI		A	B	C	D
1/4"	WTZ 50	0.0785	0.18	0.25	0.30	0.35	0.43	<b>0.50</b>	0.61	0.70	0.79	0.075	1.31	1.00	0.80	0.63
	WTZ 56	0.0881	0.20	0.28	0.34	0.39	0.48	<b>0.56</b>	0.68	0.79	0.88	0.079				
	WTZ 62	0.0981	0.22	0.31	0.38	0.44	0.54	<b>0.62</b>	0.76	0.88	0.98	0.083				
	WTZ 77	0.122	0.27	0.39	0.47	0.55	0.67	<b>0.77</b>	0.95	1.10	1.22	0.091				
3/8"	WTZ 98	0.155	0.35	0.49	0.60	0.69	0.85	<b>0.98</b>	1.20	1.38	1.55	0.102	1.50	1.12	1.17	0.75
	WTZ 120	0.196	0.44	0.62	0.76	0.88	1.07	<b>1.24</b>	1.52	1.75	1.96	0.118				
	WTZ 150	0.245	0.55	0.77	0.95	1.10	1.34	<b>1.55</b>	1.90	2.19	2.45	0.130				
	WTZ 170	0.275	0.61	0.87	1.06	1.23	1.50	<b>1.74</b>	2.13	2.46	2.75	0.138				
	WTZ 200	0.309	0.69	0.98	1.20	1.38	1.69	<b>1.95</b>	2.39	2.76	3.09	0.146				
	WTZ 250	0.392	0.88	1.24	1.52	1.75	2.15	<b>2.48</b>	3.04	3.51	3.92	0.163				
	WTZ 280	0.441	0.99	1.39	1.71	1.97	2.42	<b>2.79</b>	3.42	3.95	4.41	0.173				
	WTZ 310	0.490	1.10	1.55	1.90	2.19	2.69	<b>3.10</b>	3.80	4.39	4.90	0.183				
WTZ 390	0.613	1.37	1.94	2.37	2.74	3.36	<b>3.88</b>	4.75	5.48	6.27	0.205					
WTZ 500	0.785	1.75	2.48	3.04	3.51	4.30	<b>4.96</b>	6.08	7.02	7.85	0.228					
1/2"	WTZ 620	0.980	2.19	3.10	3.80	4.38	5.37	<b>6.20</b>	7.59	8.77	9.80	0.287	1.87	1.38	1.48	1.00
	WTZ 780	1.23	2.74	3.88	4.75	5.48	6.71	<b>7.75</b>	9.49	11.0	12.3	0.315				
	WTZ 980	1.54	3.45	4.88	5.98	6.91	8.46	<b>9.77</b>	12.0	13.8	15.4	0.343				

$$\text{Flow Rate (GPM)} = K \sqrt{\text{PSI}}$$

Standard Materials: Brass, PVC, 303 Stainless Steel and 316 Stainless Steel.

Spray angle performance varies with pressure. Contact BETE for specific data on critical applications.

CALL 1-413-772-0846  
 Call for the name of your nearest BETE representative.