

PSR

Small Physical Size Straight Jet

DESIGN FEATURES

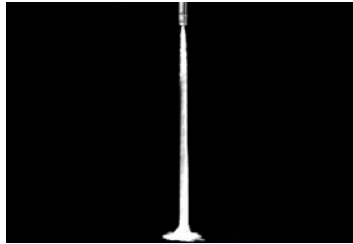
- High velocity jet
- Small physical size
- Small orifice size: 0.014" through 0.125"
- Interchangeable with most other needle type showers

SPRAY CHARACTERISTICS

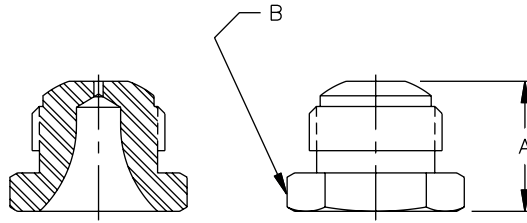
- Hard-driving straight jet
- Flow rates:** 0.028 to 8.21 gpm
- Spray angle:** 0°

TYPICAL APPLICATIONS

Cleaning, Degreasing,
Cleaning Wires and Felts—Pulp and Paper



0° Straight Jet



Male

Dimensions are approximate. Check with BETE for critical dimension applications.

PSR Flow Rates and Dimensions Straight Jet 9/16"-24 UNEF Thread

Nozzle Number	K Factor	GALLONS PER MINUTE @ PSI								Equivalent Orifice Dia. (in.)	Approx. Dim. (in.)		
		30 PSI	40 PSI	50 PSI	60 PSI	100 PSI	200 PSI	400 PSI	800 PSI		A	B	Wt. (oz.)
PSR03	0.00565	0.028	0.032	0.036	0.039	0.049	0.068	0.094	0.13	0.014	0.55	0.69	0.5
PSR11	0.0194	0.096	0.11	0.12	0.13	0.17	0.23	0.33	0.45	0.028			
PSR16	0.0272	0.14	0.16	0.18	0.19	0.25	0.35	0.48	0.67	0.033			
PSR23	0.0392	0.20	0.23	0.26	0.29	0.33	0.50	0.70	0.97	0.040			
PSR40	0.0681	0.35	0.40	0.45	0.49	0.62	0.87	1.21	1.68	0.055			
PSR67	0.114	0.58	0.67	0.75	0.81	1.04	1.45	2.02	2.82	0.070			
PSR120	0.204	1.05	1.20	1.34	1.46	1.86	2.60	3.62	5.05	0.094			
PSR195	0.332	1.70	1.95	2.17	2.37	3.03	4.22	5.89	8.21	0.125			

$$\text{Flow Rate (GPM)} = K (\text{PSI})^{0.48}$$

Standard Materials: 316 Stainless Steel.

Spray angle performance varies with pressure. Contact BETE for specific data on critical applications.

SPECIAL PURPOSE

TO ORDER: specify pipe size, connection type, nozzle number, spray angle, and material.