

NCSQ

Plastic Line/Square Pattern



120° PVC

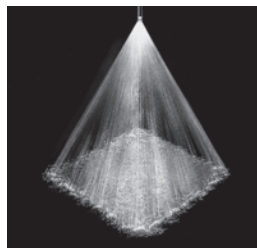
FULL CONE

DESIGN FEATURES

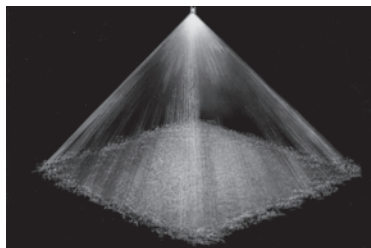
- Complete line of square pattern nozzles made of plastic and some bar stock metal alloy materials
- Uniform square coverage
- Flanged connections available in all larger models
- Male or female connections
- For metal alloy nozzles refer to SCSQ Series (pp. 44, 45)

SPRAY CHARACTERISTICS

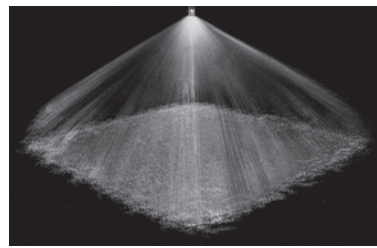
- Spray pattern:** Square Full Cone
Spray angles: 60°, 90°, and 120° standard across the corners
Flow rates: 2.01 to 2150 gpm (Higher flow rates available)



Full Cone 60° (NSQ)



Full Cone 90° (MSQ)



Full Cone 120° (WSQ)

NCSQ Flow Rates and Dimensions

Squared Full Cone, Narrow 60° (N), Medium 90° (M) and Wide 120° (W) Spray Angles, 3/4" to 6" Pipe Sizes

Male or Female Pipe Size	Nozzle Number	K Factor	GALLONS PER MINUTE @ PSI									Approx. Free Pass.		Dimensions (in.)				Wt. (oz.) Male	
			3 PSI	5 PSI	7 PSI	10 PSI	20 PSI	40 PSI	60 PSI	80 PSI	100 PSI	Approx. Orifice Dia. (in.)	Free Pass. Dia. (in.)	A	B	C	D		
3/4	NC 0703SQ	1.20	2.01	2.56	3.00	3.55	4.91	6.81	8.23	9.43	10.5	0.25	0.16						
	NC 0704SQ	1.60	2.69	3.41	4.00	4.73	6.55	9.07	11.0	12.6	14.0	0.25	0.19	1.75	1.12	2.12	1.50	1.00	
	NC 0707SQ	2.80	4.70	5.98	7.00	8.28	11.5	15.9	19.2	22.0	24.4	0.33	0.23						
1	NC 1009SQ	3.61	6.04	7.68	9.00	10.6	14.7	20.4	24.7	28.3	31.4	0.38	0.25	2.19	1.38	2.50	1.75	1.25	
	NC 1012SQ	4.81	8.06	10.2	12.0	14.2	19.7	27.2	32.9	37.7	41.9	0.45	0.30						
1 1/4	NC 1214SQ	5.61	9.40	12.0	14.0	16.6	22.9	31.8	38.4	44.0	48.9	0.47	0.34	3.25	1.75	3.25	2.00	3.75	
	NC 1217SQ	6.81	11.4	14.5	17.0	20.1	27.8	38.6	46.7	53.4	59.3	0.53	0.38						
1 1/2	NC 1516SQ	6.41	10.7	13.7	16.0	18.9	26.2	36.3	43.9	50.3	55.8	0.50	0.38						
	NC 1520SQ	8.01	13.4	17.1	20.0	23.7	32.8	45.4	54.9	62.8	69.8	0.56	0.41	4.25	2.00	4.25	2.50	6.75	
	NC 1524SQ	9.62	16.1	20.5	24.0	28.4	39.3	54.4	65.9	75.4	83.8	0.61	0.44						
2	NC 2017SQ	6.81	11.4	14.5	17.0	20.1	27.8	38.6	46.7	53.4	59.3	0.53	0.38						
	NC 2020SQ	8.01	13.4	17.1	20.0	23.7	32.8	45.4	54.9	62.8	69.8	0.56	0.41						
	NC 2033SQ	13.2	22.2	28.2	33.0	39.0	54.1	74.9	90.6	104	115	0.72	0.55	5.81	2.50	5.81	3.00	12.7	
	NC 2040SQ	16.0	26.9	34.1	40.0	47.3	65.5	90.7	110	126	140	0.80	0.63						
	NC 2045SQ	18.0	30.2	38.4	45.0	53.2	73.7	102	124	141	157	0.84	0.63						

Flow Rate (GPM) = K (PSI)^{0.47}

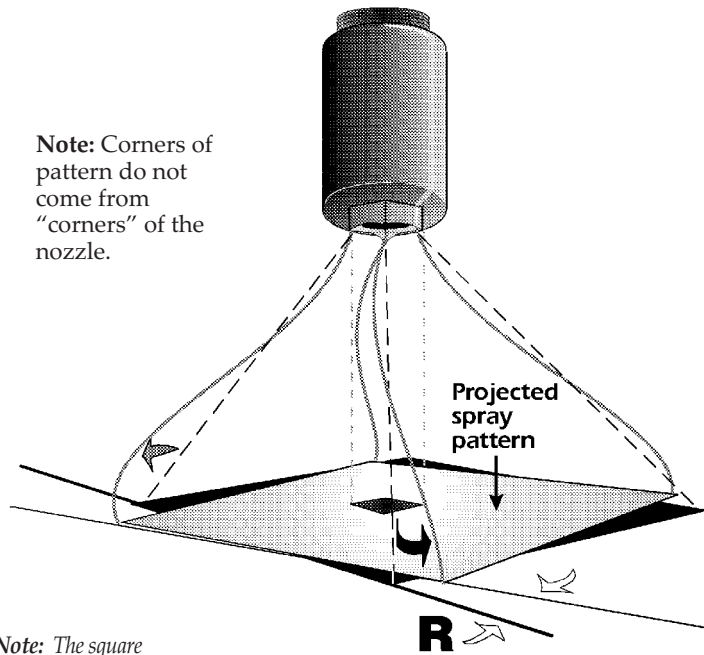
Standard Materials: PVC, Polypropylene and PTFE. See chart on page 21 for complete list.

TO ORDER: specify pipe size, connection type, nozzle number, spray angle, and material.

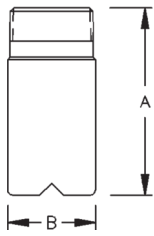


90° Polypropylene

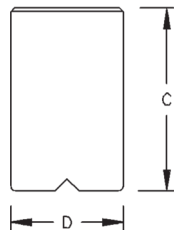
Note: Corners of pattern do not come from "corners" of the nozzle.



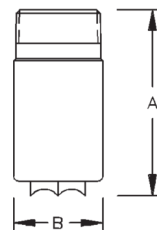
Special Note: The square spray pattern generated by the NCSQ nozzle will not line up corner to corner with the "points" of the nozzle nose. The square pattern will be rotated 10° - 15° counter clockwise when viewed from above. The figures above illustrate the angle of rotation of the pattern. R = 10° - 15°.



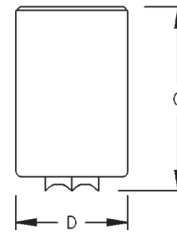
Male Narrow or Medium Angle



Female Narrow or Medium Angle



Male Wide Angle



Female Wide Angle

NCSQ Flow Rates and Dimensions

Squared Full Cone, Narrow 60° (N), Medium 90° (M) and Wide 120° (W) Spray Angles, 3/4" to 6" Pipe Sizes

Male or Female Pipe Size	Nozzle Number	K Factor	GALLONS PER MINUTE @ PSI									Approx. Orifice Dia. (in.)	Free Pass. Dia. (in.)	Dimensions (in.)				Wt. (lbs.) Male
			3 PSI	5 PSI	7 PSI	10 PSI	20 PSI	40 PSI	60 PSI	80 PSI	100 PSI			A	B	C	D	
2	NC 2050SQ	20.0	33.6	42.7	50.0	59.1	81.9	113	137	157	174	0.89	0.6	5.81	2.50	5.81	3.00	0.79
	NC 2060SQ	24.0	40.3	51.2	60.0	71.0	98.3	136	165	189	209	0.94	0.63					
	NC 2065SQ	26.0	43.6	55.5	65.0	76.9	106	147	178	204	227	1.00	0.67					
	NC 2070SQ	28.1	47.0	59.8	70.0	82.8	115	159	192	220	244	1.05	0.68					
2 1/2	NC 2570SQ	28.1	47.0	59.8	70.0	82.8	115	159	192	220	244	1.05	0.68	5.88	3.00	5.88	3.50	1.20
	NC 2580SQ	32.1	53.7	68.3	80.0	94.6	131	181	220	251	279	1.13	0.69					
	NC 2590SQ	36.1	60.4	76.8	90.0	106	147	204	247	283	314	1.19	0.78					
3	NC 3058SQ	23.2	38.9	49.5	58.0	68.6	95.0	132	159	182	202	0.95	0.63	5.88	3.50	5.88	4.00	1.40
	NC 3084SQ	33.6	56.4	71.7	84.0	99.3	138	191	231	264	293	1.17	0.88					
	NC 3096SQ	38.5	64.5	82.0	96.0	114	157	218	264	302	335	1.12	0.95					
	NC 30117SQ	46.9	78.6	99.9	117	138	192	265	321	368	408	1.36	0.97					
4	NC 40125SQ	50.1	83.9	107	125	148	205	284	343	393	436	1.39	0.98	5.88	4.50	7.25	5.00	2.91
	NC 40130SQ	52.1	87.3	111	130	154	213	295	357	409	454	1.42	1.00					
	NC 40180SQ	72.1	121	154	180	213	295	408	494	566	628	1.69	1.31					
	NC 40250SQ	100	168	213	250	296	409	567	686	786	872	1.98	1.58					
6	NC 60350SQ	140	235	299	350	414	573	794	961	1100	1220	2.38	1.70	9.50	6.63	11.0	7.19	8.12
	NC 60480SQ	192	322	410	480	568	786	1090	1320	1510	1680	2.75	1.75					
	NC 60615SQ	246	413	525	615	727	1010	1400	1690	1930	2150	3.11	1.97					

Flow Rate (GPM) = K (PSI)^{0.47}

Standard Materials: PVC, Polypropylene and PTFE. See chart on page 21 for complete list.