

LEM

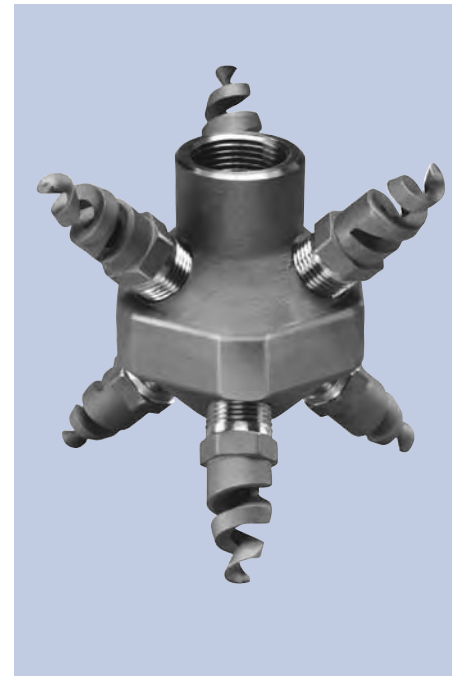
Tank Washing Nozzle

DESIGN FEATURES

- Each nozzle in the stationary cluster is a BETE clog-resistant spiral nozzle of the TF Series
- Can be supplied with various other BETE nozzles for any desired application
- Female connection

SPRAY CHARACTERISTICS

- Spherical omnidirectional coverage
 - Six nozzles arranged in cluster to project spray in all directions
- Flow rates:** 4.2 to 157 gpm (special flow rates available; special tips upon request)

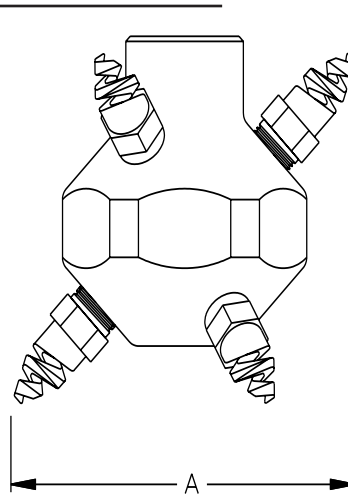


SPIRAL

LEM Coverage Chart

When Spraying at 40 - 50 PSI

| Female Pipe Size | Nozzle Number | Scrubbing Diameter (ft.) | Rinsing Diameter (ft.) |
|------------------|---------------|--------------------------|------------------------|
| 3/4 | LEM6 | 1.5 | 3.0 |
| | LEM8 | 3.0 | 6.0 |
| | LEM10 | 4.5 | 9.0 |
| 1 | LEM12 | 6.5 | 13.0 |
| | LEM14 | 6.8 | 13.5 |
| | LEM16 | 7.2 | 14.5 |
| | LEM20 | 8.0 | 16.0 |



Typical LEM installation

Dimensions are approximate. Check with BETE for critical dimension applications.

LEM Flow Rates and Dimensions

Spherical, 360° Spray Angle, 3/4" and 1" Pipe Sizes

| Female Pipe Size | Nozzle Number | K Factor | GALLONS PER MINUTE @ PSI | | | | | | | Minimum Entrance Open. (in.) A | Weight (lbs.) (oz.) | |
|------------------|---------------|----------|--------------------------|--------|--------|--------|--------|--------|---------|--------------------------------|---------------------|-------|
| | | | 10 PSI | 20 PSI | 30 PSI | 40 PSI | 60 PSI | 80 PSI | 100 PSI | | Metal | Plas. |
| 3/4 | LEM6 | 1.33 | 4.20 | 5.94 | 7.27 | 8.40 | 10.3 | 11.9 | 13.3 | 4.50 | 2.25 | 6.00 |
| | LEM8 | 2.53 | 8.00 | 11.3 | 13.9 | 16.0 | 19.6 | 22.6 | 25.3 | | | |
| | LEM10 | 3.95 | 12.5 | 17.7 | 21.7 | 25.0 | 30.6 | 35.4 | 39.5 | | | |
| 1 | LEM12 | 5.69 | 18.0 | 25.5 | 31.2 | 36.0 | 44.1 | 50.9 | 56.9 | 5.25 | 4.13 | 11.0 |
| | LEM14 | 7.68 | 24.3 | 34.4 | 42.1 | 48.6 | 59.5 | 68.7 | 76.8 | | | |
| | LEM16 | 9.96 | 31.5 | 44.5 | 54.6 | 63.0 | 77.2 | 89.1 | 99.6 | | | |
| | LEM20 | 15.7 | 49.5 | 70.0 | 85.7 | 99.0 | 121 | 140 | 157 | | | |

Flow Rate (GPM) = $K \sqrt{PSI}$

Standard Materials: Brass, 316 Stainless Steel, PVC and PTFE.

Spray angle performance varies with pressure. Contact BETE for specific data on critical applications.