

## HydroWhirl Poseidon™ spray nozzles for quick, efficient tank cleaning

The HydroWhirl Poseidon tank-washing nozzle directs the cleaning water through a rotating head at the tip of the spray assembly. This produces a slow-moving, high-impact spray action against internal surfaces of the tank. The HydroWhirl Poseidon nozzle head uses impact and repetition to quickly break up and wash away contamination. The combination of the spray pattern and slow rotation of the HydroWhirl Poseidon tank-washing nozzle is especially effective at removing scum rings or tougher, stuck-on material.

### Advantages of the HydroWhirl® Poseidon™ rotary tank-washing nozzle:

- Cleans more quickly and uses less water and lower pressure than static tank washers
- Complete 360° omnidirectional coverage
- Slow rotation speed provides higher impact and more efficient cleaning.
- Durable PTFE nozzle construction withstands extreme chemical and elevated temperature environments.
- Simple internal design allows reliable flow-through operation
- Design validated by lab testing to 200°F (93°C)
- Maintenance-friendly design allows disassembly, inspection, and reassembly with basic hand tools.
- Made from FDA-approved materials for use in Clean-in-Place (CIP) applications

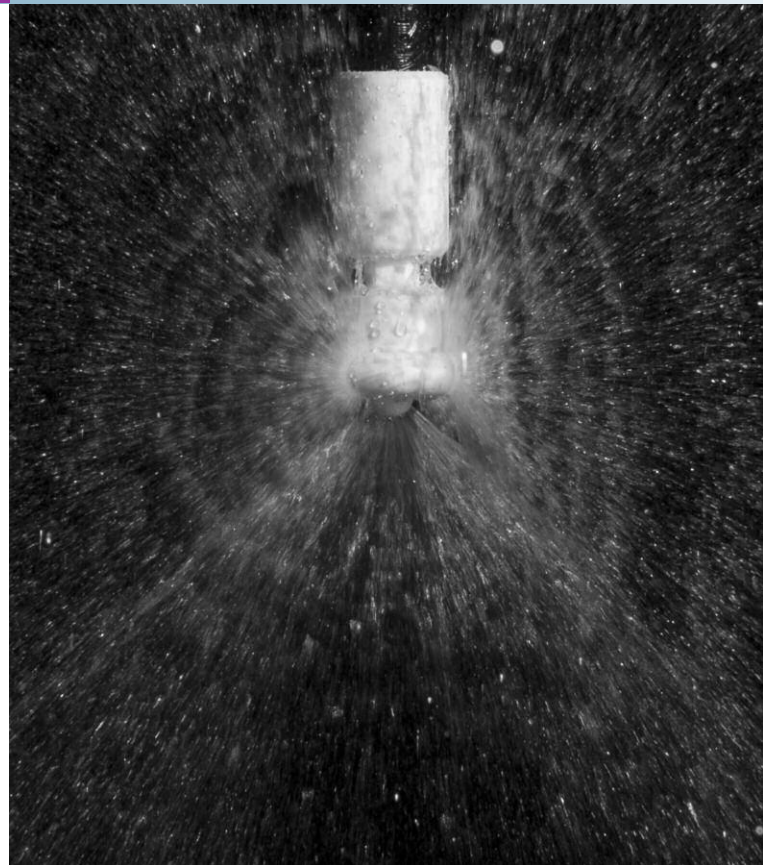
### The HydroWhirl Poseidon tank-washing nozzle has been carefully designed for long service life

#### Comprehensive Quality Control:

- Material traceability controlled throughout production
- BETE product quality is maintained using a quality system registered to ISO 9001-2008

#### Design flexibility:

- Available with pipe, tube, or DIN clip-on connections. Threaded connections available upon request.
- Flow range: 15.3 to 89.5 gpm



The HydroWhirl Poseidon tank-washing nozzle is an outstanding combination of design, quality, and performance. The HydroWhirl Poseidon tank-washing nozzle is ideal for anyone who needs a polymer nozzle for reliable, efficient cleaning of tanks and other interior spaces.

BETE Fog Nozzle, Inc. has been pioneering nozzles for the food-processing and pharmaceutical industries for over 60 years. Our Applications Engineering department will work with you to ensure you choose the right BETE nozzle for your application.

# BETE®

BETE Fog Nozzle, Inc.

50 Greenfield St.  
Greenfield, MA 01301  
T (413) 772-0846  
F (413) 772-6729  
[www.bete.com](http://www.bete.com)

# HydroWhirl® Poseidon™

## Tank Washing - PTFE Spray Nozzle

### DESIGN FEATURES

- Cleans more quickly, and uses less water and lower pressure than static tank washers
- PTFE construction:
  - Ideal for harsh chemical environments
  - Corrosion resistant
- Three connections: pipe, tube, or DIN clip-on. Threaded connections available upon request.
- Made from FDA-approved materials for use in Clean-In-Place (CIP) applications.

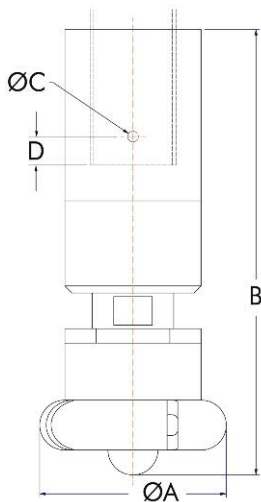
### SPRAY CHARACTERISTICS

- Slow spinning, longer spray dwell time on the target surface increases impact over conventional rotating designs
- Complete 360° omnidirectional spray pattern

**Flow rates:** 15.3 to 89.5 gpm

### Minimum Tank Opening:

Small: 3", Large: 3.3"



HydroWhirl Poseidon™ Nozzle Coverage Chart When spraying at 40 psi	
Nozzle Number	Washing Diameter (ft)
HWP-32	15
HWP-37	12
HWP-48	18
HWP-55	22
HWP-65	20
HWP-73	17

CONNECTION SIZES				
Connection Type	Body Size			
	SMALL		LARGE	
Pipe Clip On	3/4"	1"	1-1/4"	1-1/2"
Tube Clip On	1"	1-1/4"	1-1/2"	1-3/4"
DIN Clip On	20mm	25mm	40mm	

Threaded connections available upon request

Dimensions are approximate. Check with BETE for critical dimension applications.  
Not recommended for applications over 60 psi.

### HydroWhirl Poseidon™ Nozzle Flow Rates\* and Dimensions

Body Size	Nozzle Number	Spray Angle	GALLONS PER MINUTE @PSI						Dimensions (in)				Wt (oz)
			10 psi	20 psi	30 psi	40 psi	50 psi	60 psi	A	B	C	D MAX	
SMALL	HWP-32	360°	15.3	22.2	27.6	32.2	36.3	40.0	2.94	6.40	0.19	0.50	21
	HWP-37		17.8	25.6	31.7	36.9	41.5	45.7					
LARGE	HWP-48		22.4	32.7	40.7	47.6	53.8	59.3	3.25	7.30	0.19	0.50	29
	HWP-55		26.3	37.9	47.0	54.8	61.7	67.9					
	HWP-65		31.5	45.1	55.8	64.8	72.8	80.0					
	HWP-73		35.5	50.7	62.5	72.6	81.4	89.5					

Standard Materials: Nozzle: PTFE; Retaining Clip: 316 stainless steel

\*Threaded connections may restrict the flow. Contact BETE for more information.

[www.BETE.com](http://www.BETE.com)

CALL 413-772-0846  
Call for the name of your nearest BETE representative.